

MOTORISTS



Know When and Where to Yield.



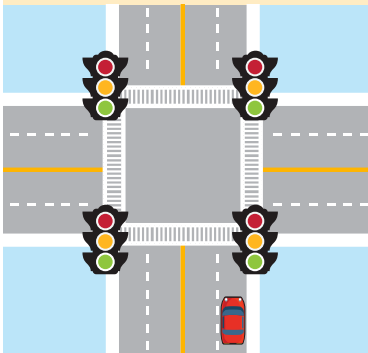
Keep Your Distance from Bicyclists.



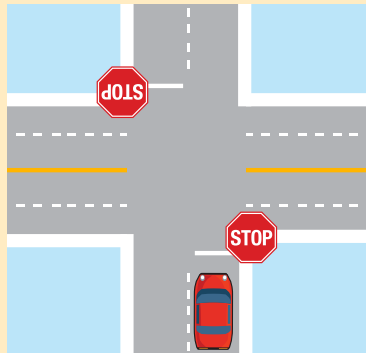
Be aware of your environment and avoid distractions to keep yourself and others safe. No texting while driving—it's the law. [Texas Transportation Code, §545.4251].

BE ALERT. Yield to pedestrians at all marked and unmarked crosswalks [Texas Transportation Codes, §541.302, §552.003].

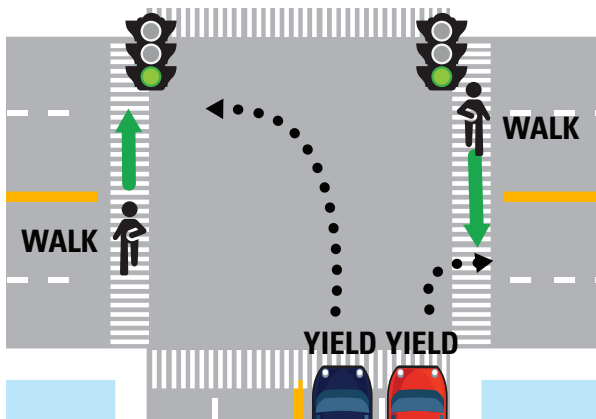
MARKED CROSSWALK



UNMARKED CROSSWALK

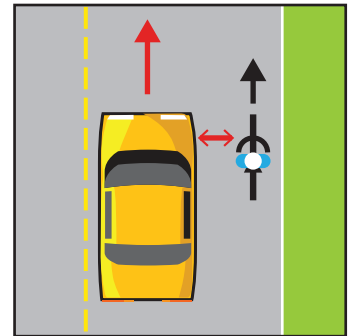


LOOK BEFORE YOU GO. Yield to pedestrians when turning at a stop light, even if the light is green [Texas Transportation Codes, §552.001, §552.002].



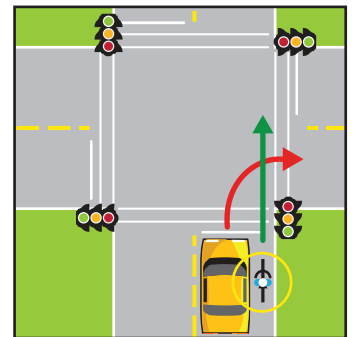
MAKE A SAFE SPACE.

Maintain a safe distance when passing a bicyclist [Texas Transportation Codes, §545.053, §551.101]. Local ordinances may specify the required distance (e.g., 3 feet).



THINK RIGHT, DO RIGHT.

Yield to bicyclists on your right when making right turns [Texas Transportation Codes, §545.101, §545.103, §541.401, §551.101].





BICYCLISTS

Keep Motorists Informed.

Follow the rules of the road. Make sure motorists know where you are and where you're going. Be visible and clear in signaling your intentions. Obey traffic signals—it's the law.

FOLLOW THE SIGNS.

Obey all traffic signs and signals [Texas Transportation Code, §551.101].



PEDESTRIANS

Know When and Where to Go.

Pedestrians must yield to vehicles when crossing outside of a crosswalk. When crossing, obey all signs and signals — it's the law.

NO CROSSWALK?

YIELD TO TRAFFIC. Yield to vehicles when crossing outside of a crosswalk [Texas Transportation Code, §552.005].

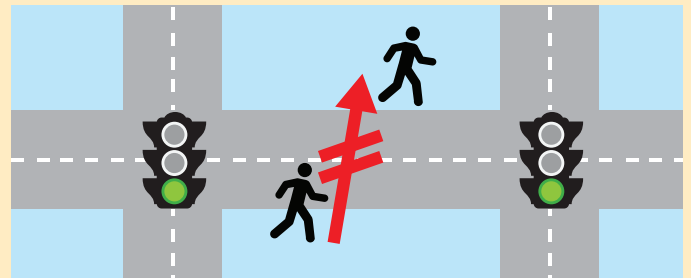


BE SAFE, BE SEEN.

Use a white light on the front and a red light or reflector on the rear of your bicycle [Texas Transportation Code, §551.104].



USE THE CROSSWALK. Don't cross the road between two adjacent intersections with traffic signals in use. [Texas Transportation Code, §552.005].

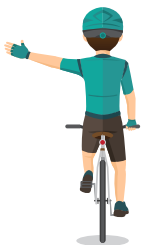


GIVE YOURSELF A HAND. Use hand signals when changing lanes and turning [Texas Transportation Codes, §551.101, §545.104–107].

Use arm gestures to clearly signal intent.

Left-turn signal:

Extend the left hand and arm horizontally



Right-turn signal:

Extend the left hand and arm upward OR extend the right hand and arm horizontally



Decrease speed:

Extend the left hand and arm downward



HERE'S YOUR SIGNAL. Follow all crossing signals [Texas Transportation Code, §552.002].