

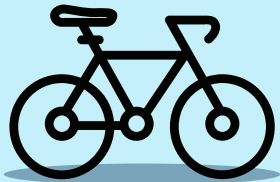
VEHICLES

The devices below are considered **vehicles** and according to the Texas Transportation Code are assigned the same rights and duties as drivers of motor vehicles (except where by its nature the act of operating a vehicle differs from the act of operating the device or vehicle).

For more law enforcement resources, please visit our webpage here.



BICYCLE



A device, excluding a moped, that is capable of being ridden solely using human power and has either:

- (A) two tandem wheels at least one of which is more than 14 inches in diameter;
- (B) three wheels, two of which are in parallel, and at least one of the three wheels is more than 14 inches in diameter; or
- (C) any number of wheels and adaptive technology that allows the device to be ridden by a person with a disability.

TTC 541.201 (2)

E-BICYCLE



A bicycle:

- (A) equipped with:
 - (i) fully operable pedals; and
 - (ii) an electric motor of fewer than 750 watts; and
- (B) with a top assisted speed of 28 miles per hour or less.

“Top assisted speed” means the speed at which the bicycle’s motor ceases propelling the bicycle or assisting the rider.

Class 1:

- (A) equipped with a motor that assists the rider only when the rider is pedaling; and
- (B) with a top assisted speed of 20 miles per hour or less.

Class 2:

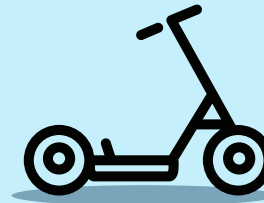
- (A) equipped with a motor that may be used to propel the bicycle without the pedaling of the rider; and
- (B) with a top assisted speed of 20 miles per hour or less.

Class 3:

- (A) equipped with a motor that assists the rider only when the rider is pedaling; and
- (B) with a top assisted speed of more than 20 but less than 28 miles per hour.

TTC 664.001

MOTOR-ASSISTED SCOOTER



A self-propelled device with:

- (A) at least two wheels in contact with the ground during operation;
- (B) a braking system capable of stopping the device under typical operating conditions;
- (C) a gas or electric motor not exceeding 40 cubic centimeters;
- (D) a deck designed to allow a person to stand or sit while operating the device; and
- (E) the ability to be propelled by human power alone.

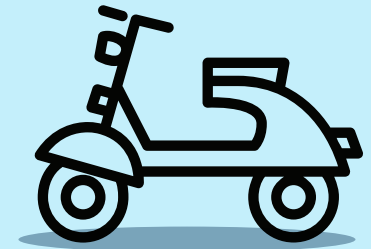
TTC 551.351(1)

May be operated on streets with a speed limit of 35 mph or less.

TTC 551.352

MOPED

A Moped is considered a motor vehicle and therefore should only be operated where motor vehicles are permitted. The same laws that apply to a bicycle, also apply to a Moped (except where by its nature it cannot apply to a Moped). A Moped has to be registered in Texas.



A motor vehicle equipped with a rider’s saddle with no more than three wheels on the ground, that cannot attain a speed in one mile of more than 30 miles per hour, and the engine of which:

- (A) cannot produce more than five-brake horsepower; and
- (B) if an internal combustion engine, has a piston displacement of 50 cubic centimeters or less and connects to a power drive system that does not require the operator to shift gears.

TTC 541.201 (8)

If the moped has an engine piston displacement of 250 cubic centimeters or less, it may not be driven at a speed of more than 35 mph at night unless it is equipped with a headlamp that reveals a person or vehicle 300 feet ahead.

TTC 545.361

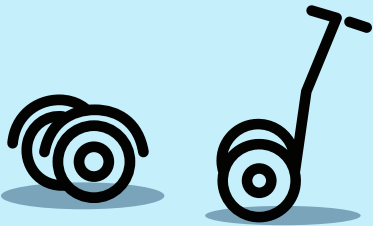
MOTORIZED CONVEYANCES

The devices below are considered **motorized conveyances** and the riders would be considered pedestrians. The rules regarding where and how they should be operated varies.

For more law enforcement resources, please visit our webpage here.



ELECTRIC PERSONAL ASSISTIVE MOBILITY DEVICE



A two non-tandem wheeled device designed for transporting one person that is:

- (A) self-balancing; and
- (B) propelled by an electric propulsion system with an average power of 750 watts or one horsepower.

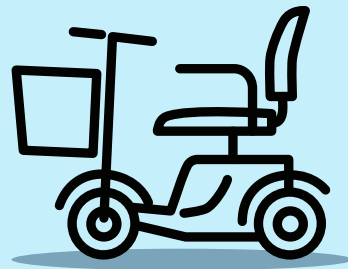
TTC 551.201

Required to use on a sidewalk, when available. If there is no sidewalk, it can be operated only on roads with a speed limit of 30 mph or less. May also be operated on a path set aside exclusively for bicycles

The same rules that apply to the use of a bicycle apply to an electric personal assistive mobility device.

TTC 551.202.

MOTORIZED MOBILITY DEVICE



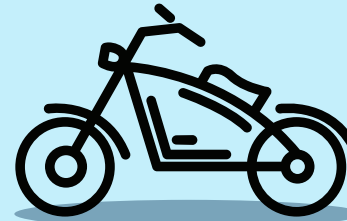
A device designed for transportation of persons with physical disabilities that:

- (A) has three or more wheels;
- (B) is propelled by a battery-powered motor;
- (C) has not more than one forward gear;
- (D) is not capable of speeds exceeding eight miles per hour

A person operating a non-motorized wheelchair or motorized mobility device is considered to be a pedestrian.

TTC 552A.0101

POCKET BIKE OR MINIMOTORBIKE



A self-propelled vehicle that is equipped with an electric motor or internal combustion engine having a piston displacement of less than 50 cubic centimeters.

- (A) designed to propel itself with not more than two wheels in contact with the ground.
- (B) has a seat or saddle for the use of the operator.
- (C) not designed for use on a highway.
- (D) is ineligible for a certificate of title under Chapter 501.

TTC 551.351(2)

State law does not authorize their operation on a:

- (A) highway, road or street;
- (B) bicycle path or sidewalk.

May be used on private property only.

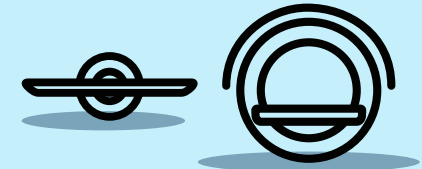
TTC 551.353

OTHER MOTORIZED DEVICES

Motorized Skateboards



One-Wheeled Devices



Riding Lawn Mower

